

Specification and information for In~Door internal doors

DOOR LEAF COMPOSITION

The outer skins are manufactured from a U.V. stabilised extruded PVCu sheet. The skins are flame retardant and are self-extinguishing once the flame has been removed; they hold a Class 1 surface spread of flame to BS476 part 7 classification. They are UV stable and have a high impact and chemical resistance. The skin contains an anti-microbial, which is effective in reducing and preventing the growth of micro organisms on the door surface.

The internal core of the door is of a type A expanded polystyrene construction. The polystyrene contains a fire retardant additive specially formulated to restrict the extent of burn when tested to BS4735. It is classified under BS476 and is totally recyclable, non toxic and inert containing no CFC's or HFC's. This is within a medium density fibreboard sub frame.

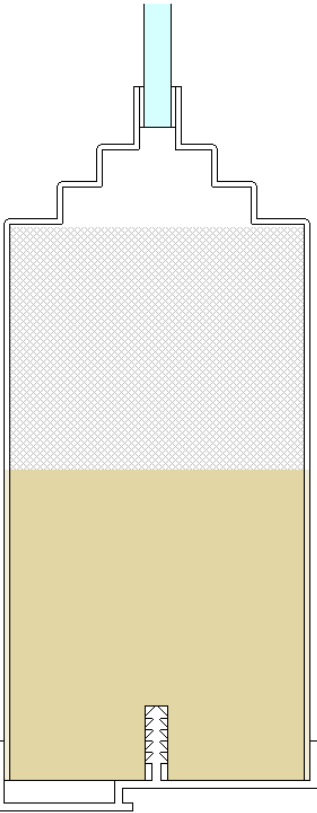
All doors are bonded together using moisture curing single part, Polyurethane adhesive, and are then edge banded using an ABS plastic edge band.

GLAZING

All glazing is 4mm single toughened safety glass.

EASY FIX TRIM

An extruded PVCu profiled trim that can be fitted to the hinge side of the door to allow trimming. The trim is rebated to accept a hinge of up to 22mm wide



FIRE DOOR (FD 30)

All fire doors are a construction of a finger jointed softwood sub frame and a fire check plasterboard and polystyrene core. They are edge banded on the vertical sides with exposed softwood on all other edges. The softwood is treated with a moisture repellent primer.

